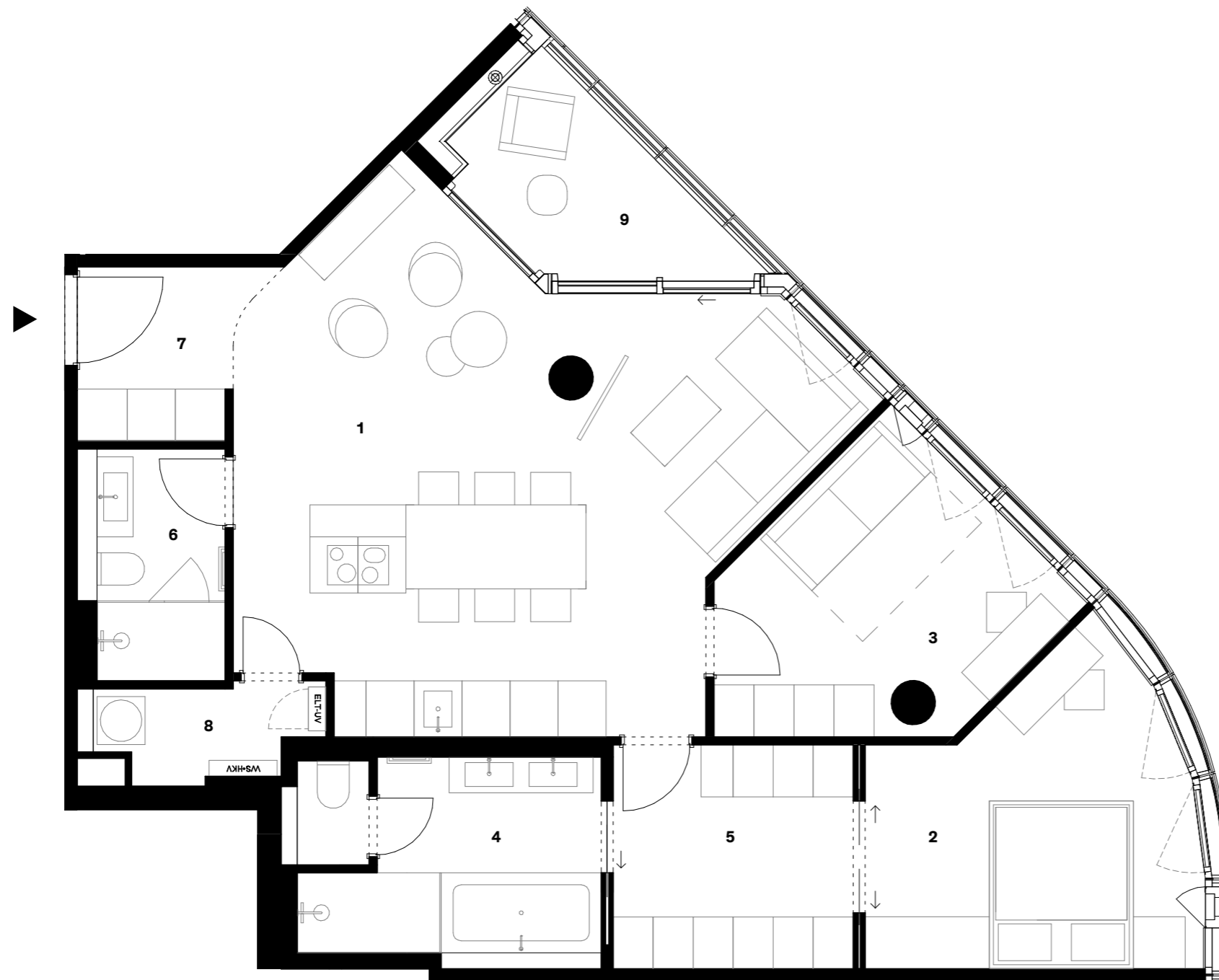


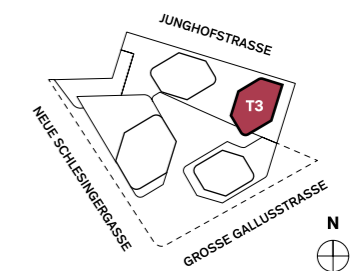
Apartment 15.11

Turm 3, 15. OG
99,50 m², 3 Rooms

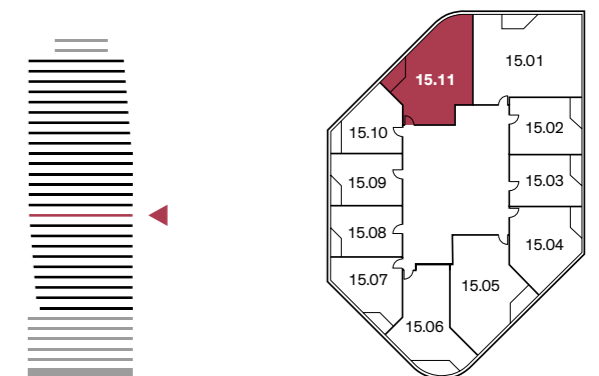


Details

	m ²
1 Living an dining area	39,35
2 Bedroom 1	14,14
3 Bedroom 2	12,32
4 Bathroom 1	9,63
5 Dressing Room	8,40
6 Bathroom 2	5,12
7 Entrance	4,18
8 Utility room	3,15
9 Loggia	6,44
Total living space	102,72
Living space according to the Living Space Ordinance (with 50 % of the loggia area)	99,50



PLAN



15th Upper floor

Floor Plan



A PROJECT BY

Groß & Partner
Grundstücksentwicklungs-
gesellschaft mbH
Siesmayerstraße 21
60323 Frankfurt am Main
www.gross-partner.de

EXCLUSIVE DISTRIBUTION

GP Sales GmbH
Siesmayerstraße 21
60323 Frankfurt am Main
T +49 (0) 69 36 00 95 750
living@4frankfurt.de
www.4frankfurt.de

DISCLAIMER

All floor plans and floor space details are subject to change as planning progresses. Furniture, kitchen objects and furnishings are not part of the object of purchase. The agreements in the purchase contract and in the building description are exclusively authoritative.